

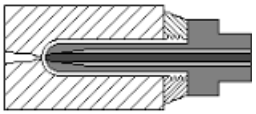
Used Machines



8000 Hours
Worked



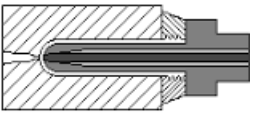
Serial Info



Used Machines



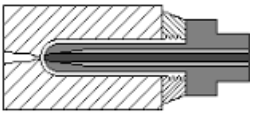
HIM



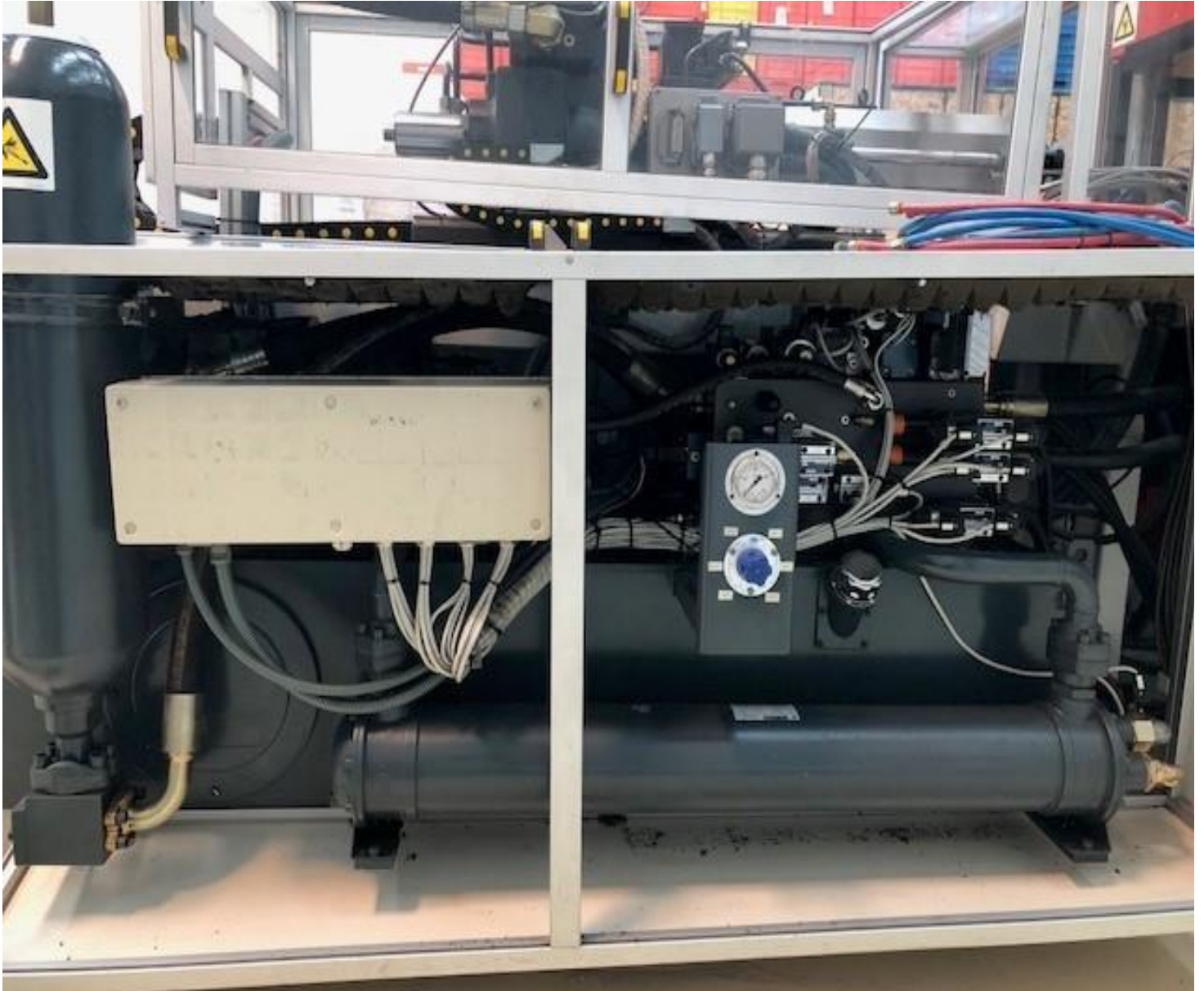
Used Machine



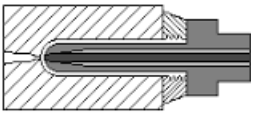
View PLC B&R



Used Machines



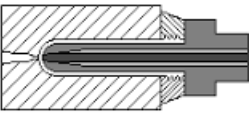
Hydraulic



Maq Usada



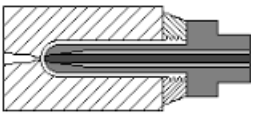
Electric Cabinet



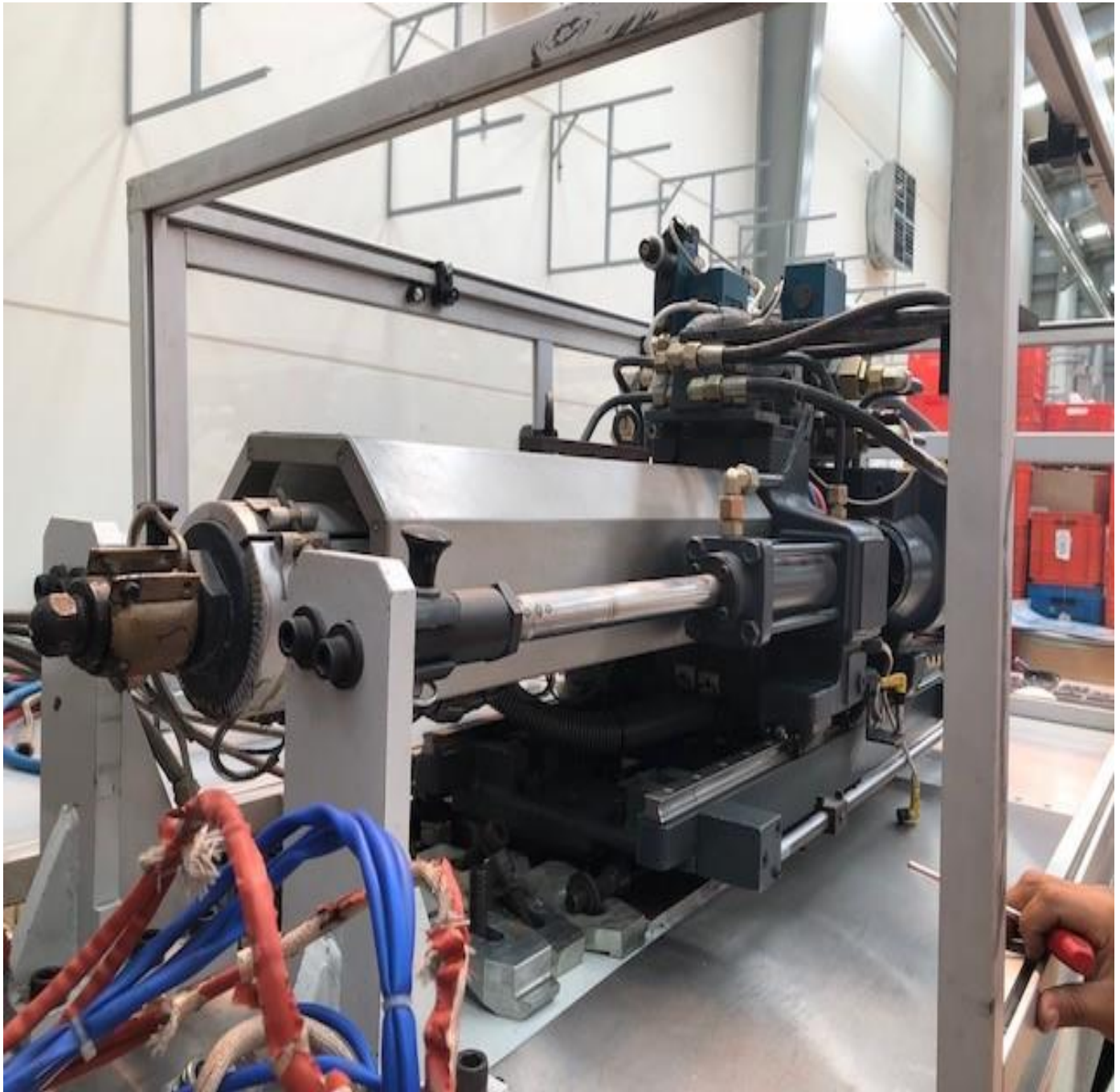
Maq Usada



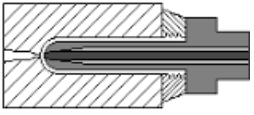
Electric Cabinet Other view



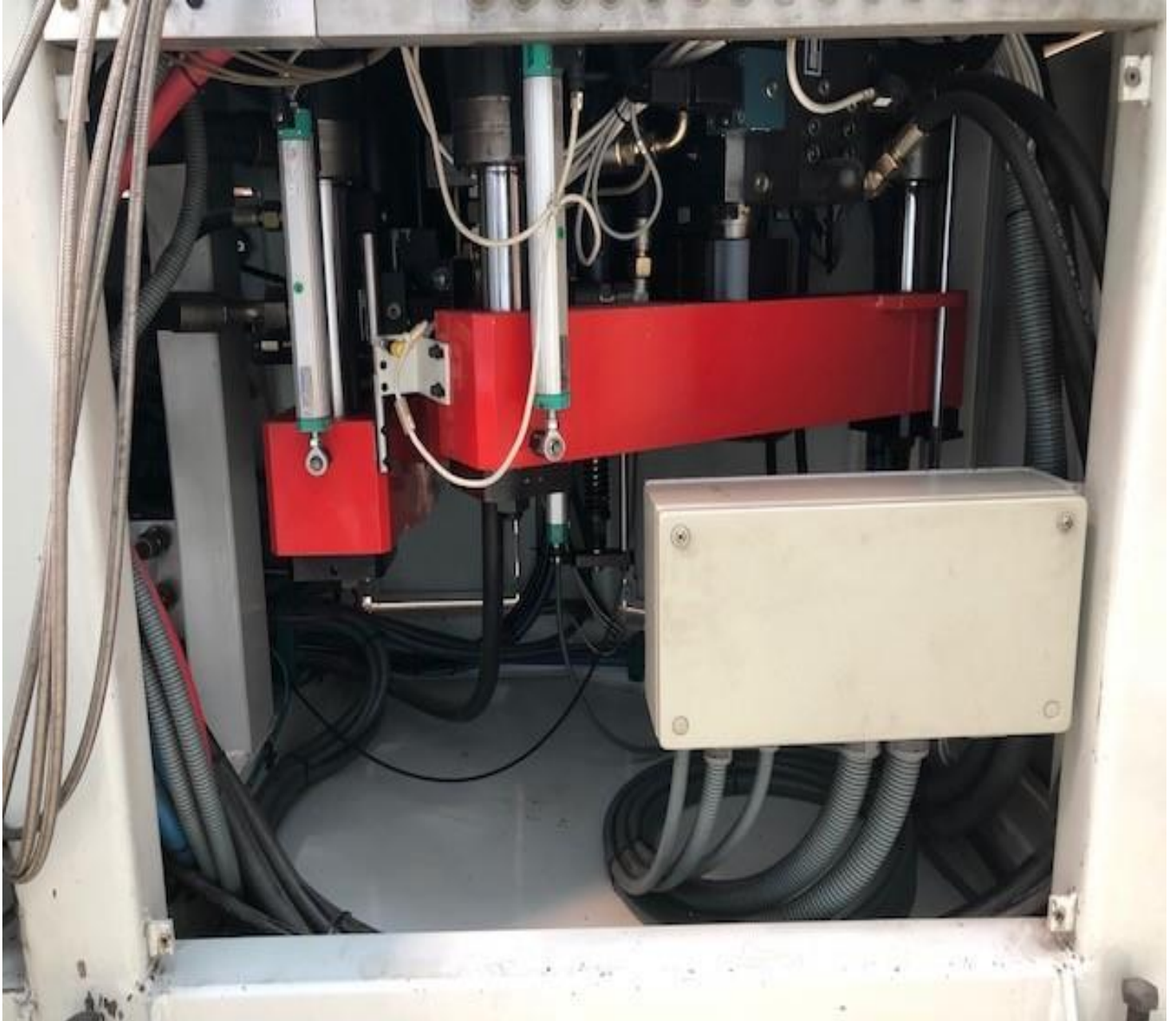
Maq Usada



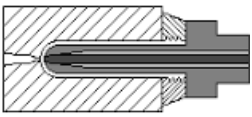
Injection View



Maq Usada



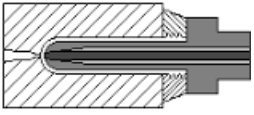
Transducers Clamp View



Used Machine



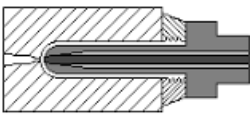
Injection Clamp View



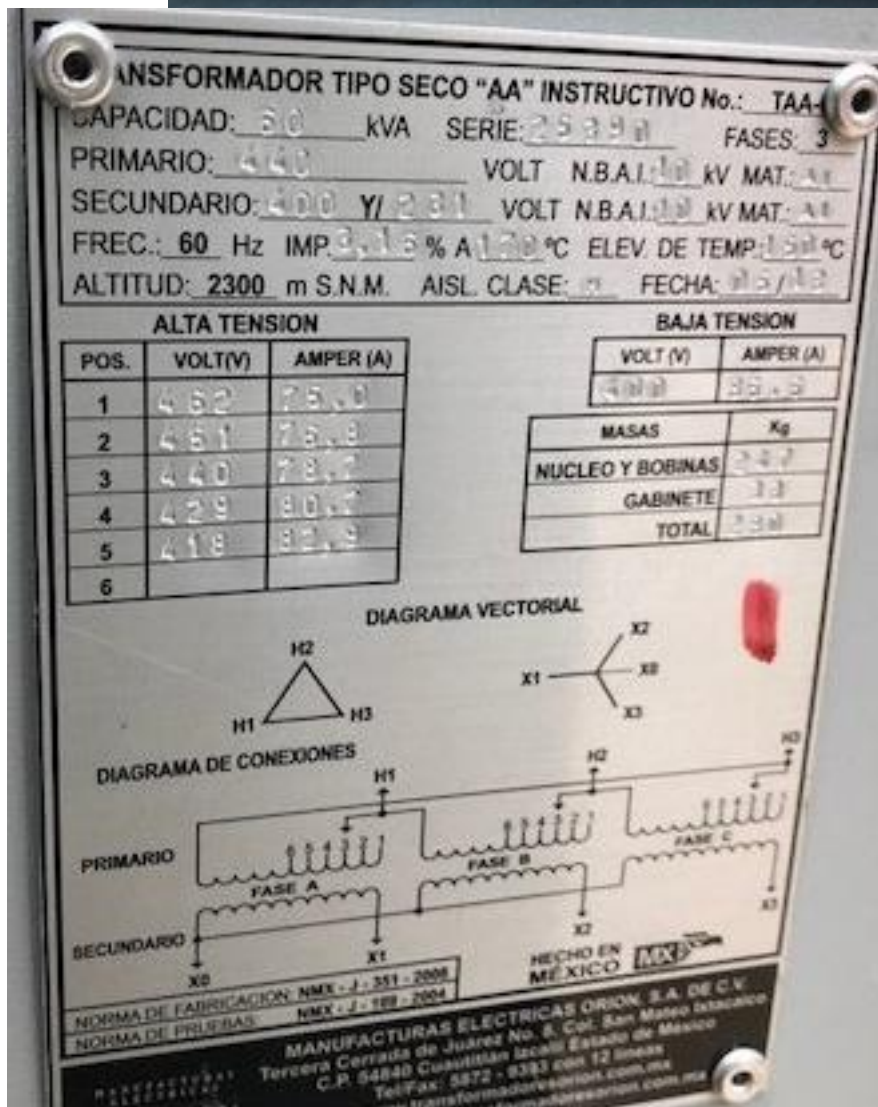
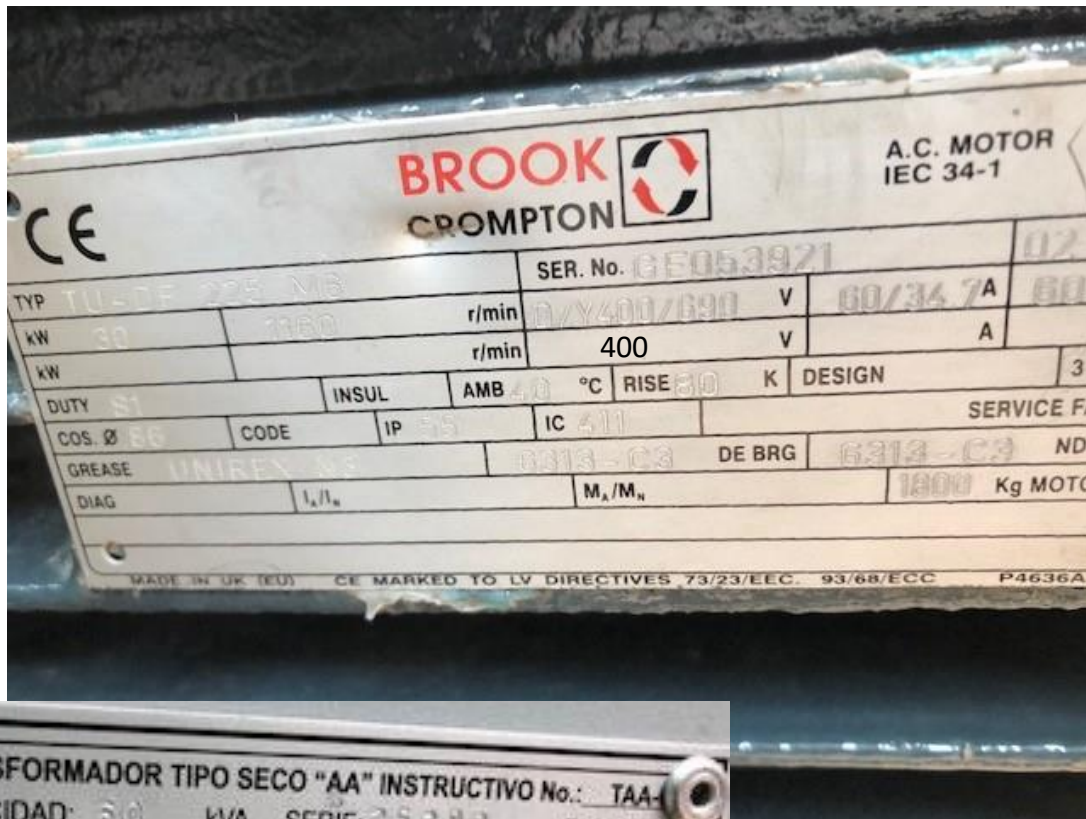
Maq Usada



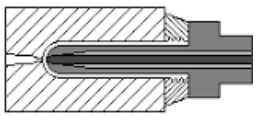
Table View/ Safeties



Maq Usada



Info Transformer That We will need to Install



Used Machine

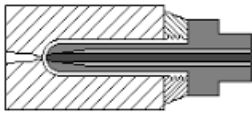
Tech Info 1

| Spec machine Description | Info |
|------------------------------|--------------|
| Model | IBS 45-3S |
| Serial | M02J023 |
| Year | 2002 |
| Injection Unit Ferromatik | K60 / 40 PET |
| Diameter Screw | 40 mm |
| L/D | 17.3 |
| RPMs PE / PET | 0-400 |
| Plastification PE / PET | 44.6 Kg / Hr |
| Max Injection Capacity | 150 grams |
| Max Pressure on the Plastic | 1,504Bars |
| Max Pressure Injection Unit | 50 KN |
| Max Inj Stroke | 140 mm |
| Stroke Inj Unit | 240 mm |
| Heat Zones | 5 |
| Power Heat | 10.5 Kw |
| MOLDS | |
| Clamp Close Inj Mold | 362 KN |
| Clamp Close Blow Mold | 91 KN |
| Stroke Open Mold | 128mm |
| Height Mold Closed | 254 mm |
| Max Lenght plates | 456mm |
| Max Width Mold Plates | 380 mm |
| Electric | |
| Electrical Power Main | 230 V |
| Frecuency | 60 Hz |
| Current | 113 Amp |
| Phases | 3+N+T |
| Total KW | 42 KW |
| Average Consumtion | 28 KW |
| Oil and Pressure Info | |
| Max Hyd Oil | 400 L |
| Max Hyd Pressure | 200 Bar |

Tech Info 2

| | |
|---------------------------------------|--------------------|
| Main Motor Power | 30 KW |
| Main Hyd Pump P1 Flow(980rpm) | 76 l/min = 20 GPM |
| Aux Hyd Pump P2 Flow(980rpm) | 60 l/min = 16 GPM |
| High P Hyd Pump P3 Flow(980rpm) | 10.5 l/min=2.8 GPM |
| Pneumatic | |
| Low Pressure Circuit | 5-8 Bar |
| High Pressure Circuit | 25-30 bar |
| Consumtion Air low Pressure | 75 NI/min |
| Consumtion Air High Pressure | 250 NI/Min |
| Water | |
| Mod Water Cooling | 8-12 °C |
| Cooling Water Oil and throat | 10-24 °C |
| Flow Water for Molds | 37 NI/Min |
| Flow Water for Hyd Oil and Throat | 53 NI/Min |
| Pressure water cooling | 4 Bar |
| Capacity Cooling Mold for 1 Kg PE/PET | 590 KJ/h |
| Capacity Cooling Molds | 46.300KJ/h |
| General | |
| Power Mtr Table Cores | 1.1 Kw |
| Plastics for Work | PE-and PET |
| Max Width Machine | 2.900M |
| Length Machine | 4.8M |
| Hight Machine | 3.0M |
| Weight | 5.5 Ton |
| Noise Level Operator Zone | < 85 dB |
| Soft Version | IBS 1R008 |
| Electric Sch | F307473 |
| Pneumatuc Sch | F509862 |
| Hydraulic Schmatic | F509861 |
| Machine Design | F509860 |

KJ/h=4.19Kcal/h



Used Machine

Well, there is one IBS from Italy, with almost 8000 hours in 16 years, and it is for PET, the customer wants to sell because it does not use frequently and need space in the floor

Current State Comments;

The Mechanical, Electric, and Hydraulic Electronic Groups are observed in excellent condition and the investment would be made in:

1.- We will need to install transformer , the main Voltage in the machine is 400 Vac,
Cost in Mexico of an equal transformer.

between \$ 1600 and \$ 2300 USD, 8 days T delivery

2 .- The operator interface has a keyboard and mouse because the Touch Screen does not work , if you prefer to change the interface, with Uniloy, cost Approx, or you can try to repair. New HIM , \$ 12,000 USD,.

Any doubt or comment, with full confidence.