

Canmatic

For wrap-around labelling with pre-cut labels and hotmelt



High flexibility with wrap-around labelling

For container decoration with hotmelt and cut wrap-around labels, the Canmatic is setting standards already for many years. The machine has been designed as a rotary machine and is equipped with a precisely operating labelling station. With regard to efficiency, accuracy and speed, the Canmatic absolutely takes a leading position.

At a glance

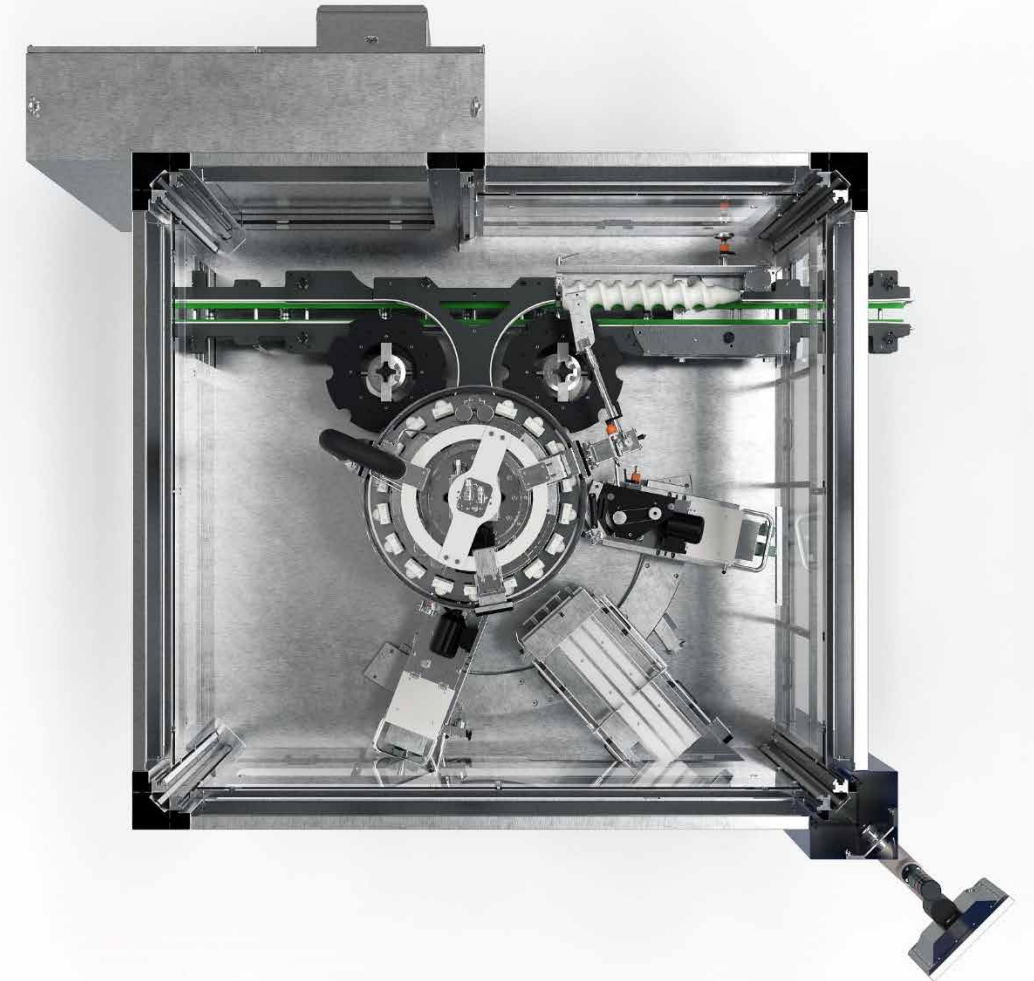
- Wrap-around labelling for cylindrical and specially shaped containers
- Precise container fixing using centring bells and container plates
- Quick access to the user interface through individual transponders
- Use of remote maintenance possible as an option





Method of operation

1. An infeed worm spaces the incoming containers to the respective machine pitch.
2. The infeed starwheel transfers the containers to the rotating container table.
3. Here they are firmly held and centred between the container plates and the centring bells.
4. The first hotmelt unit applies a vertical strip of glue to the container.
5. The container picks up a label from the label magazine with a glue strip.
6. The second hotmelt unit applies glue to the end of the label. The label is glued on the overlap.
7. The labelled containers are collected by the discharge starwheel and transferred to the conveyor.





Two variants for wrap-around labelling

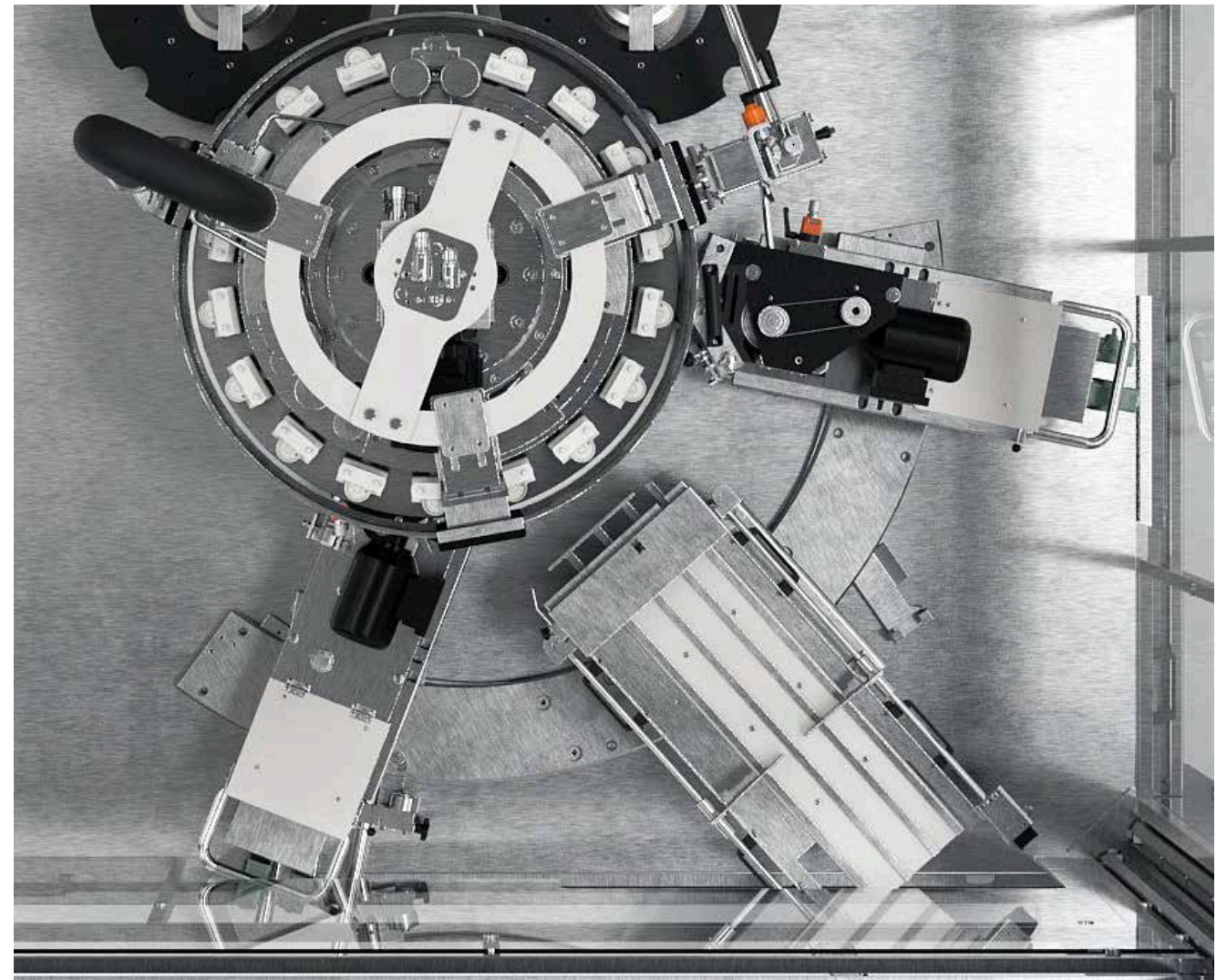
Canmatic with CL labelling station

- Output range of 3,000 to 72,000 containers per hour with only one labelling station, depending on the label length
- Two independently operating hotmelt units with glue roller
- Consistent leading and trailing-edge gluing quality

Canmatic with glue spraying system

The leading edge is glued via individual nozzles, the trailing edge is glued using a continuously slotted nozzle.

- Output range of 3,000 to 64,000 containers per hour with only one labelling station, depending on the label length
- Reduced cleaning times as well as reduced energy and media consumption thanks to closed gluing systems



In the glue spraying system the first hotmelt unit is replaced with several spraying nozzles and the second one with a slotted nozzle.

CL = Classic



Canmatic CL labelling station with glue rollers

Technical features and benefits

- Two independently operating hotmelt units
 - Robust mechanical design
- Individual adjustment of the glue temperature on the hotmelt units
- Exact regulation of the glue film thickness using a scaled micrometer adjusting screw
 - Consistent leading and trailing-edge gluing quality
- Magazine for approx. 9,000 wrap-around labels, position adjustable
 - User-friendly label refilling
- Overlapping correction possible during production
 - Mechanical technology for demanding framework conditions (power fluctuations, dust, etc.)
- Adjustment of the axes with a handwheel including register
 - Quick and repeat accurate change-over of the decoration





Canmatic CL labelling station with glue spraying system

Technical features and benefits

- Individual nozzles for leading-edge gluing, continuous slotted nozzle for trailing-edge gluing
 - The amount of glue applied can be individually adjusted to suit the container and label
- Closed gluing system
 - Reduced cleaning times
 - Considerably longer cleaning intervals
 - Lower consumption of energy and media
 - Significant glue saving of up to 50 percent (in comparison to the conventional system)
- No glue roller as a handling part
 - Saving several minutes for each change-over process
- Contact-free glue application with nozzles
 - No cleaning of glue rollers required

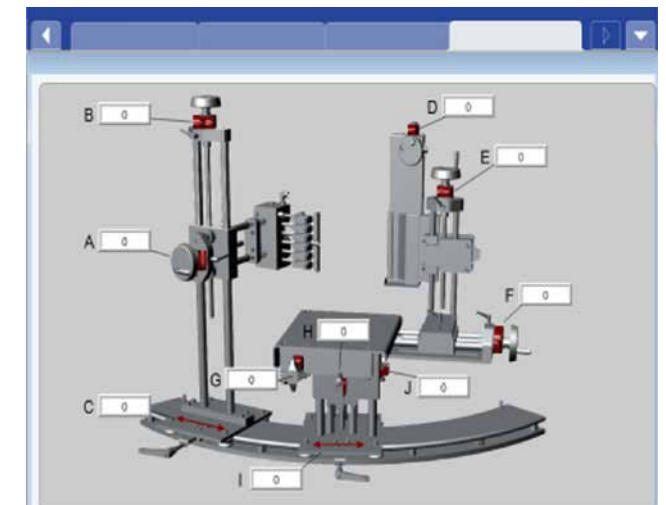
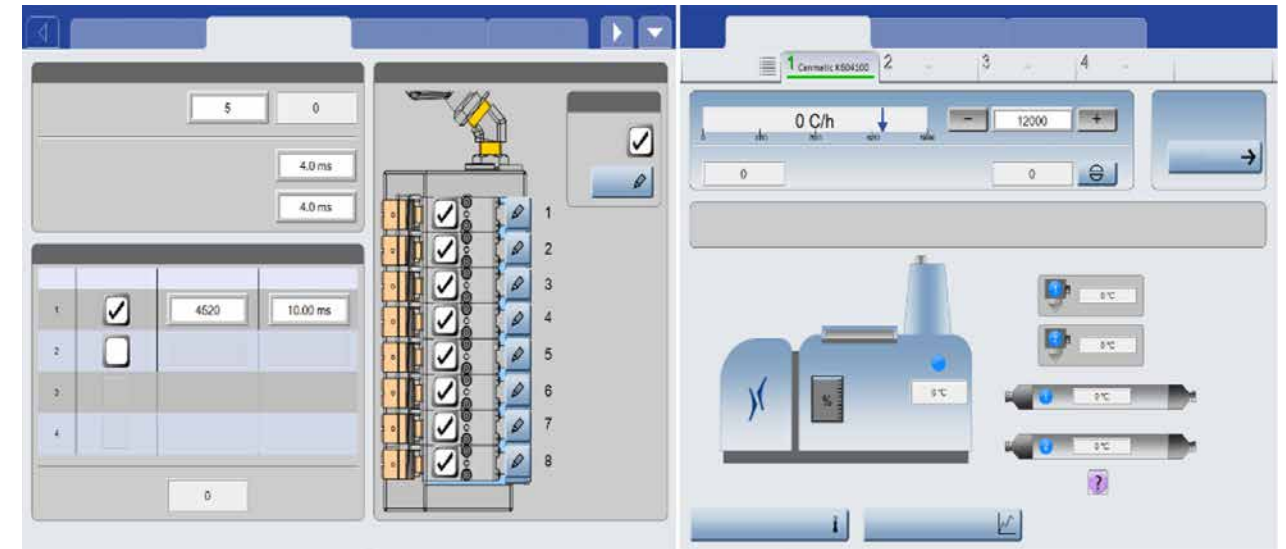




Canmatic CL labelling station with glue spraying system

Technical features and benefits

- Adjustment of the axes with a handwheel including register
- The settings are displayed on the HMI
 - Quick and repeat accurate change-over of the decoration
- Complete visualisation of the spraying system on the labeller touch-screen
 - No duplicate entries necessary (in contrast to third-party systems)
- Parameterisation on the touch-screen of the labeller, commissioning through KRONES
 - Easy operation - without having to change between two HMIs
- Maintenance and spare parts supplied by KRONES
 - One single contact partner, overall responsibility for the labelling system provided by the same manufacturer





Additional equipment

Hotmelt bowl with glue level monitoring

- An electronic measuring device monitors the fill level in the hotmelt bowl.
- When the fill level is low, a warning will be displayed on the HMI .



Multifunctional clamping starwheel

- Available as infeed, discharge, or distribution starwheel
- No curved guides are necessary
- Starwheels are used for several container types with a diameter variance of up to 20 millimetres
- Use as a rejection system after label inspection possible





System upgrades: Checkmat inspection unit

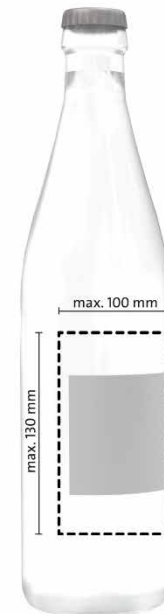
Method of operation

Configuration in packages (0, 1, 2, 3) with the following inspection options for the label and print depending on the requirements:

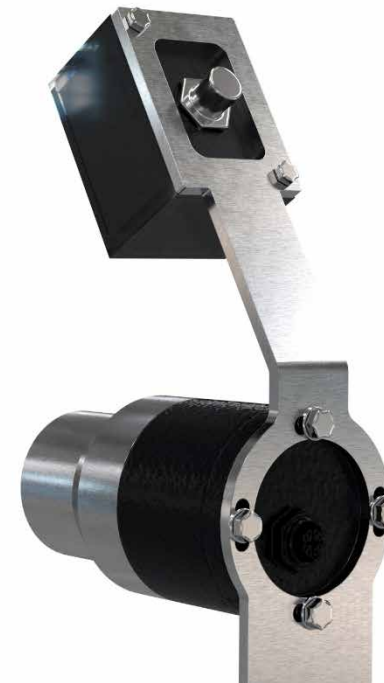
1. Presence
2. Position and slant
3. Correctness using a 2D code
4. Comparison of pattern and logo
5. Flagging labels
6. Bar code: Checking the presence and reading
7. OCR (Optical Character Recognition): Checking the presence and reading (e.g. date)

Benefits to you

- Rejection of faulty containers
- Comprehensive statistics functions and software
- Perfect integration in the main machine
- Relief for the operators
 - Creation of new types for additional graphics with wizard



Compact camera



EM camera in packages (0, 1, 2, 3)



Benefits to you

High labelling precision

Fixation of containers between the centring bell and the container plate ensures a highly precise container decoration.

Low glue consumption

Only two narrow strips of hotmelt are required for labelling, one at the leading edge and the other one at the trailing edge of the label.

High performance

Both Canmatic variants cover all requirements for precision labelling from the low to the maximum output range.

User friendliness

The Canmatic features ease of access and ease of operation.

Time savings

Only short change-over times needed when changing container or label type.

Maximum availability

The machine is based on a robust labelling technology tolerating faults.

Future reliability

The Canmatic can be retrofitted and converted also after many years of operation.





Everything from a single source

KIC KRONES adhesives – the all-rounder for a strong grip

Regardless if PET or glass, plastic or paper, labels or packagings – at KIC KRONES, you will find your ideal adhesives for a high-quality product presentation.

KIC KRONES cleaning agents make your machine shine

Only if the production environment is immaculate, can your product be brilliant. KIC KRONES provides you with the optimum cleaning agents and disinfectants for each individual production step.

Lubricants from KIC KRONES for every production step

Whether for gears, chains or central lubrication systems – our greases and oils are true all-round talents. You can reach every lubrication point, protect your line and provide gentle treatment for your product thanks to our products' suitability for food.

KRONES Lifecycle Service – partner for performance

Also after having purchased a new machine, KRONES will take care of your line; the LCS experts are always ready to consult you and translate your goals and wishes into optimal LCS solutions.





Digitalisation



Process
technology



Bottling and
packaging equipment



Intralogistics



Lifecycle
Service

We do more.

 **KRONES**